













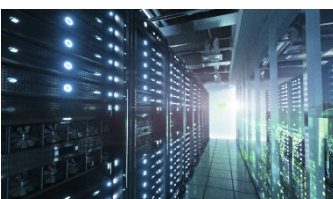
www.immersiveconcepts.com

Immersive Concepts, LLC. is a minority-owned 8(a) and HUBZone-certified multi-discipline consulting firm based in Beltsville, MD with client support offices in Miami, FL and San Antonio, TX with an ACTIVE TOP SECRET facilities clearances that serves the mission critical technology and operational needs of Federal and Commercial clients. We provide a broad range of services designed to improve program performance for our customers including IT Strategic Management Consulting; IT Network Infrastructure Management & Modernization Services; Unified Communications; Technical Innovation Services; Audio Visual & Video Teleconferencing Systems Design/Implementation and Management/Operations; Cloud and Data Center Support Services; Relocation Services; and Facilities Construction. Our team of highly trained, experienced, fully certified professionals bring years of experience and expertise to every project and are poised to accept and tackle the most challenging of client requirements

Immersive Concepts is dedicated not only to the resolution of complex problems but also to providing quality and timely service. While Immersive Concepts offers a broad range of services, we deliver just one standard performance: **Excellence.**



AUDIO VISUAL DESIGN



NETWORK INFRASTRUCTURE



VIDEO TELEPRESENCE



CONSTRUCTION SERVICES

Unified Communications

- ✓ Planning & Business Assessment
- ✓ Solution Design
- ✓ Mobility
- ✓ Implementation, Integration, & Optimization
- ✓ Deployment & Multivendor Integration
- ✓ Evaluation & Optimization
- ✓ Pilot Planning & Deployment

System Design & Integration

- ✓ Audio Visual System Build, Design, and Integration
- ✓ Network/Voice/Video Design, Implementation & Integration
- ✓ Security Systems Design, Implementation & Integration
- ✓ Infrastructure provisioning & Optimization
- ✓ Data Center Design & Build
- ✓ Data Center Consolidation & Migration
- ✓ Audio Visual as a Service (AVASS)

Construction Services

- ✓ General Contracting and Construction Management Services
- ✓ Building Renovations & Upgrades
- ✓ Electrical Engineering
- ✓ Acoustical Solutions
- ✓ Design/Build and Integration of AV Infrastructure
- ✓ HVAC Services
- ✓ Furniture Layout Design & Installation

Project Management & Program Support

- ✓ Agile Development Methodology
- ✓ Rational Unified Process
- ✓ Business Case Analysis
- ✓ Requirements Engineering
- ✓ Use Case Development
- ✓ Concept of Operations Development
- ✓ Risk Assessment
- ✓ Methodology & Process Support
- ✓ Resource Coordination
- ✓ Budget Administration & Procurement
- ✓ ATO/RMF Support Services
- ✓ Change Management
- ✓ Configuration Management

Technical Documentation Support

- ✓ Project Plans
- ✓ Requirements Documentation
- ✓ Developer Documentation
- ✓ Interface Development
- ✓ Knowledge Management
- ✓ Test Plans
- ✓ Metadata Documentation
- ✓ User Guides
- ✓ Policy & Procedures
- ✓ Installation & Configuration Manuals
- ✓ White Papers & Technical Proposals

Cloud Services

- ✓ Desktop as a Service (DaaS)
- ✓ Disaster as a Service (DRaaS)
- ✓ Infrastructure as a Service (IaaS)
- ✓ Full Suite Enterprise Resource Planning (ERP)
- ✓ Enterprise Asset Management (EAM)
- ✓ Enterprise Service Management (ESM)
- ✓ GAP Analysis and Risk Evaluation
- ✓ Report Finding and Recommendations
- ✓ Analyzing Future State Requirement
- ✓ Consultation and Design Cloud Architecture

Customers



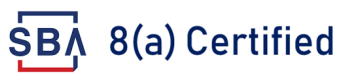
Industry NAICS Codes

- 236220 Commercial and Institutional Building Construction
- 237130 Power and Communication Line and Related Structures Construction
- 238210 Electrical Contractors and Other Wiring Installation Contractors
- 238320 Painting and Wall Covering Contractors
- 238390 Other Building Finishing Contractors
- 334118 Computer Terminal and Other Computer Peripheral Equipment Manufacturing
- 334220 Radio and Television Broadcasting and Wireless Communications Equipment Manufacturing
- 334310 Audio and Video Equipment Manufacturing
- 423430 Computer and Computer Peripheral Equipment and Software Merchant Wholesalers
- 423690 Other Electronic Parts and Equipment Merchant Wholesalers
- 484210 Used Household and Office Goods Moving
- 517911 Telecommunications Resellers
- 517919 All Other Telecommunications
- 518210 Data Processing, Hosting, and Related Services
- 519190 All Other Information Services
- 541330 Engineering Services
- 541410 Interior Design Services
- 541430 Graphic Design Services
- 541511 Custom Computer Programming Services
- 541512 Computer Systems Design Services**
- 541513 Computer Facilities Management Services
- 541519 Other Computer Related Services
- 541611 Administrative Management and General Management Consulting Services
- 541618 Other Management Consulting Services
- 541990 All Other Professional, Scientific, and Technical Services
- 561110 Office Administrative Services

Certifications and Partnerships



Accessing Our Services



- ✓ Project Management Professional (PMP)
- ✓ Certified Scrum Master (CSM)
- ✓ Microsoft LYNC
- ✓ CISCO Advance Telepresence Engineers
- ✓ POLYCOM Certified Video Engineers
- ✓ Computer Information Systems
- ✓ A+/Security +
- ✓ Software Engineering
- ✓ Microsoft Certified Systems Engineer
- ✓ CISCO Certified Network Associate (CCNA) in Routing/Switching & Voice
- ✓ CISCO Certified Network Professional (CCNP) in Voice
- ✓ CISCO Certified Internet Expert (CCIE)

Subcontract Vehicles



US ARMY ITES-25

Clearances

- ✓ TOP SECRET Facility Clearance
- ✓ TS/SCI with Lifestyle Poly

Solutions

- ✓ Six Sigma Methodology

Corporate Office and Integration Center

11750 Beltsville Drive, Suite 120
 Beltsville, MD. 20705
 Phone 855.513.8500
 Fax 866.522.7726

www.immersiveconcepts.com
 Washington, DC. | Miami, FL. | San Antonio, TX.

Company Data

DUNS: 969960637
 CAGE: 6KLY2
 POC: Rubin Sloan - President/CEO
 rsloan@immersiveconcepts.com
 (301) 246 - 3298